

HENRY COUNTY

ROAD 16C

PLEASANT TWP.

CENTER LINE CONTROL  
&  
WITNESSES

UPDATED 11/29 & 30/2005

# Road 16C - Pleasant Twp.

Road 16C - Witness Ties - Updated 11/29 and 11/30/2005

Point A Section 28

Marker RR Spike 0.5' west of west edge of pavement Rd. 16C

36.18' NW to center USGS Monument (Tablet missing)

99.95' NE to "+" north end of 54" conc. pipe (new)

11.46' SW to duplex SE/side guard rail post

Point B Section 28

Marker RR Spike - 1.5' west of east edge of pavement

28.75' W to duplex N/side cable marker post

39.90' SW to PK north end of plastic pipe (P)

55.75' SW to PK south end plastic pipe (P)

Point C Section 21

Marker RR Spike - 2'± west of east edge of pavement

46.44' NW to "+" SE corner of catch basin (P)

15.88' ESE to "+" east end of conc. pipe (P)

60.05' SW to duplex N/side power pole

66.88' WSW to "+" west end conc. pipe (P)

49.88' WNW to duplex S/side cable marker post

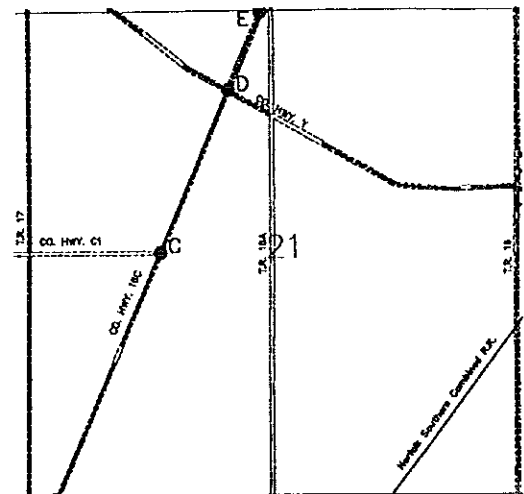
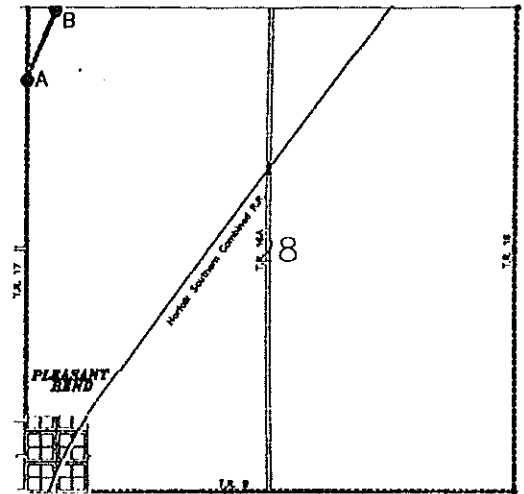
Point D Section 21

Marker RR Spike in intersection & in line with east edge of pavement Rd. 16C

41.33' NE to "+" north end conc. pipe (P)

60.56' SE to "+" south end conc. pipe (P)

54.28' SW to duplex NW/side cable marker



Road 16C - Witness Ties - Updated 11/29 and 11/30/2005

Point E Section 21

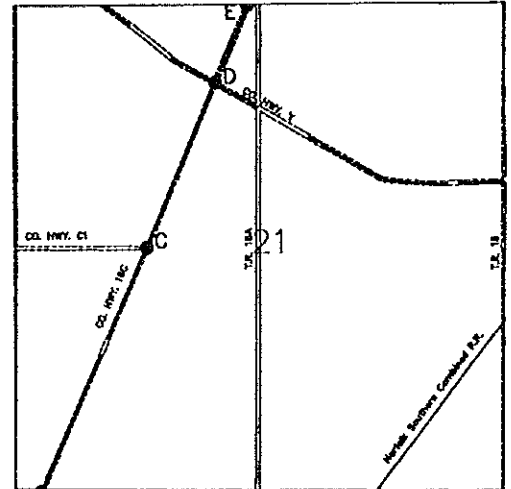
Marker RR Spike at intersection of centerline 16C and north line of Sec. 21

42.76' W to duplex S/side power pole

46.93' E to 5/8" x 36" iron pin on ditch bank (no field check)

48.35' SE to 5/8" x 36" iron pin on ditch bank (no field check)

20.81' NW to 5/8" iron pin 1' west of edge of pavement



Point F Section 16

Marker 5/8" Iron Pin at intersection of center line 16C and N-S 1/4 Sec. Line, Sec. 16

54.69' SW to "+" in east face conc. banister near south end (no field check)

38.27' WSW to "+" in face north end banister (no field check)

46.07' WNW to duplex S/side power pole (no field check)

28.05' NE to PK nail at P.I. of curve (no field check)

45.34' SE to west face of octagonal conc. post at ground (no field check)

232.35' S to S 1/4 Post, Sec. 16 (no field check)

Point P.I. Section 16

Marker Small RR Spike at P.I. of curve

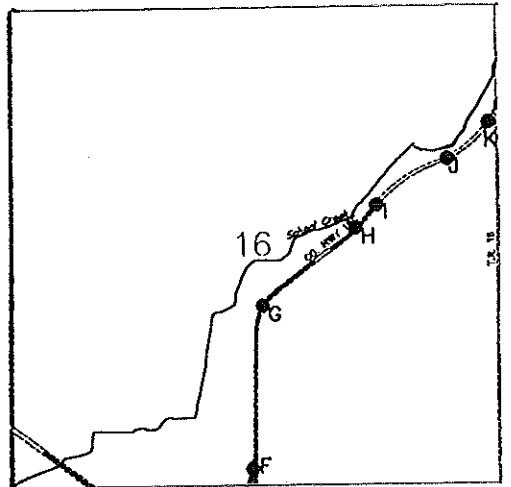
59.49' SE to sawed "+" in near face octagonal conc. post

258.54' SSW to S 1/4 Post, Sec. 16 (no field check)

80.03' SW to "+" in east face of banister near south end

59.60' WSW to "+" in face of north end of banister

49.29' W to duplex S/side power pole



Point G Section 16

Marker Gone

\_\_\_\_\_  
 \_\_\_\_\_  
 \_\_\_\_\_  
 \_\_\_\_\_  
 \_\_\_\_\_  
 \_\_\_\_\_

Road 16C - Witness Ties - Updated 11/29 and 11/30/200

Point H Section 16

Marker Iron Pin in stone berm, PK's 6' N & W

33.32' NW to "+" in buried conc. headwall 12' north of edge of pavement (P)

29.21' ENE to "+" in conc. headwall (P)

14.01' ESE to "+" in south corner of catch basin (P)

Point I Section 16

Marker RR Spike in center line of pavement

57.80' NW to SE corner barn foundation (no good)

34.58' N to duplex W/side corner post

43.93' N to duplex W/side cable marker post

35.30' E to duplex SW/side cable marker post

Point J Section 16

Marker RR Spike 18" south of center of pavement

116.90' NE to duplex S/side power pole

14.20' NW to 5/8" iron pin at north edge of pavement

Point K Section 16

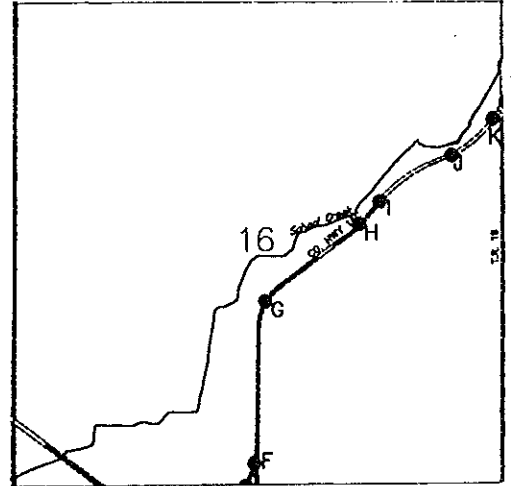
Marker RR Spike in center of pavement at cross-over

25.75' S to "+" (new) in conc. slab over pipe (P)

22.86' N to "+" in north end conc. pipe (P)

80.68' ENE to new duplex S/side power pole

36.84' N to spike S/side cable marker post



Road 16C - Witness Ties - Updated 11/29 and 11/30/200

Point L Section 15

Marker PK Nail on centerline Rd 16C, 5± east of west line Sec. 15

21.73' W to 5/8" iron pin at edge of berm

20.63' SE to duplex W/side power pole

Point M Section 15

Marker RR Spike 1' north of centerline Rd. 16C

70.92' NW to southwest corner foundation of garage

69.17' NNE to PK nail E/side telephone pole

27.50' SE to duplex W/side power pole

Point N Section 15

Marker Iron Pin in berm 2' south of edge of pavement - P.I. of curve

PK's 6' NW & N

47.34' E to duplex S/side power pole

48.67' SSW to "+" in center of conc. headwall

33.19' E to duplex N/side wood anchor post

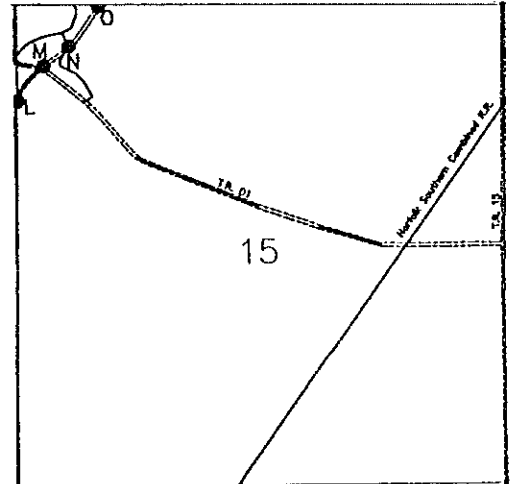
58.08' W to "+" north end of CMP (P)

Point O Section 15

Marker RR Spike on center line Rd. 16C at north line of Sec. 15

34.40' E to duplex W/side power pole

20.79' N to 5/8" iron pin at edge of berm



Road 16C - Witness Ties - Updated 11/29 and 11/30/2005

Point P Section 10

Marker RR Spike on center line Rd. 16C, 68± north of south line Sec. 10

67.48' SW to RR Spike on south line, Sec. 10

52.70' SW to iron pin on edge of berm

55.19' S to duplex N/side power pole

Point Q Section 10

Marker Iron Pin - 7± north of edge of pav't - P.I. of curve west of Pfau's (1987) house

84.73' E to duplex S/side power pole

42.38' W to PK nail N/side 12" pine

28.80' N to duplex W/side 8" pine

Point R Section 10

Marker ½" Iron Pin 9± north of edge of pav't - P.I. of curve at McQuill (1987) residence

28.48' WSW to duplex S/side telephone pole

48.04' SE to duplex W/side power pole

48.07' NNE to SE corner well house foundation

Point S Section 10

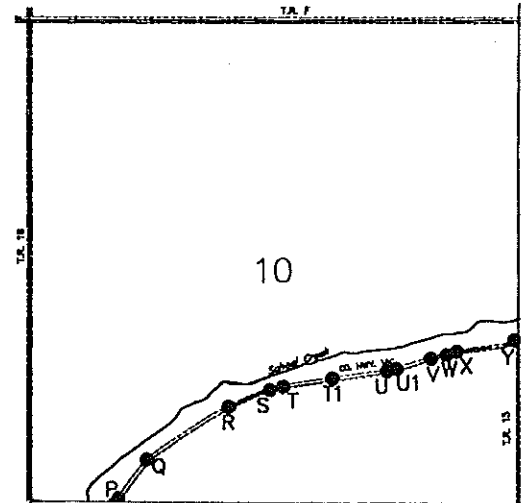
Marker Small RR Spike in pavement - P.I. of curve 39.05' west of N-S ½ Sec. Line

62.98' NE to duplex S/side wood anchor post

62.22' NE to "+" center, north wall of catch basin (P)

51.35' ESE to "+" NW corner catch basin (P)

46.76' SE to duplex N/side power pole



Road 16C - Witness Ties - Updated 11/29 and 11/30/2005

Point T Section 10

Marker PK Nail in pavement - 110' east of N-S ¼ Sec. Line

26.66' NNW to "+" in conc. base of fence post (P)

58.13' NE to "+" in conc. base of fence post (P)

99.65' S to NE corner conc. porch slab

Point T1 Section 10

Marker RR Spike in center of pavement

28.42' N to duplex (new) E/side wood corner post

66.28' ESE to "+" NW corner catch basin

30.18' S to duplex W/side wood corner post (leaning west)

43.42' SE to duplex SW/side power pole

Point U Section 10

Marker Small RR Spike 2' south of pavement

23.52' SSW to PK nail E/side 21" maple

99.88' ENE to "+" NW wing of culvert

98.48' E to "+" (new) top center of banister

53.81' WSW to PK nail E/side 18" maple

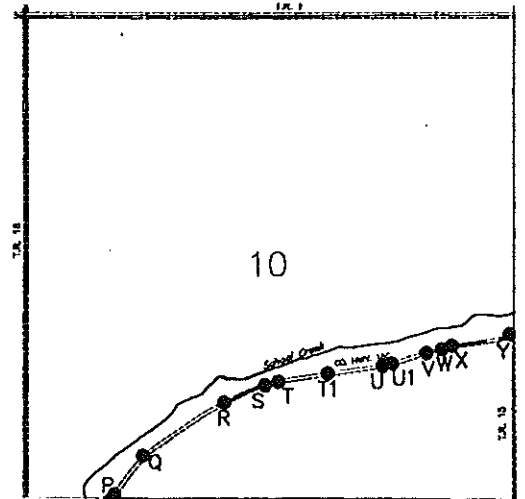
Point U1 Section 10

Marker Small RR Spike in center of pav't, 1.5' east of RR Spike, ¼ mi. west of TR 15

17.41' NNW to "+" in NW wing of culvert (mark to mark)

18.39' S to sawed "+" top center of banister (mark to mark)

45.34' SW to PK nail E/side 18" maple



Road 16C - Witness Ties - Updated 11/29 and 11/30/2005

Point V Section 10

Marker RR Spike in center pavement at NW corner Sauer (1987) property

30.62' NNE to "+" in north parapet of catch basin (P)

63.54' NE to duplex SE/side wood post (U.T.S.)

26.24' SE to "+" NW corner catch basin (P)

Point W Section 10

Marker RR Spike in center pavement at NE corner Sauer (1987) property

29.76' SE to notch in top of east end of 4" CIP (P)

33.45' S to duplex W/side power pole

56.99' SSE to NE corner brick foundation at ground

Point X Section 10

Marker Small RR Spike in pav't, 2' north of center line of pavement, 660± west of Rd. 15

83.88' ESE to duplex N/side power pole

94.17' WSW to notch in top of east end of 4" CIP

13.12' NNE to 5/8" iron pin at edge of berm

Point Y Section 10

Marker Iron Pin in berm of intersection radius - P.I. of curve at Rd. 15

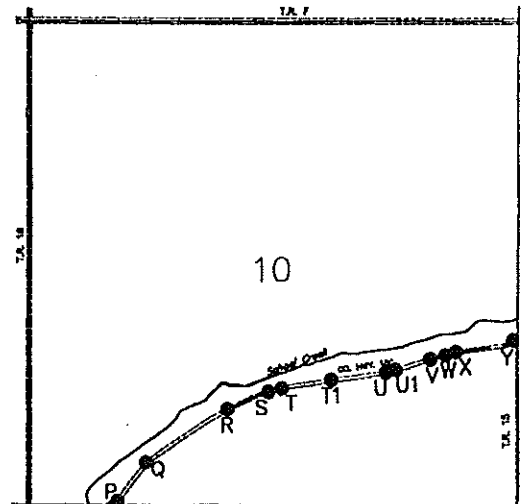
PK's 6' NW & NE

55.63' E to duplex N/side power pole

64.26' NW to SE corner of barn foundation

107.10' NE to duplex S/side power pole

29.32' SSE to sawed "+" in south end RCP (P)





Road 16C - Witness Ties - Updated 11/29 and 11/30/2005

Point Z Section 11

Marker Small RR Spike in pav't 4' south of c/l at northerly corner Evans (1987) property

58.36' N to duplex W/side power pole

59.16' SE to PK nail NE/side 12" tree on property line

Point A1 Section 11

Marker Small RR Spike 1' west of east edge of pavement at east-west field line

60.09' WSW to duplex N/side power pole

25.01' S to "+" NW corner catch basin (P)

Point B1 Section 11

Marker Iron Pin 4' ± east of edge of pavement

PK's 6' W & NW

51.18' ENE to "+" SE corner catch basin

71.40' NNE to duplex SW/side power pole

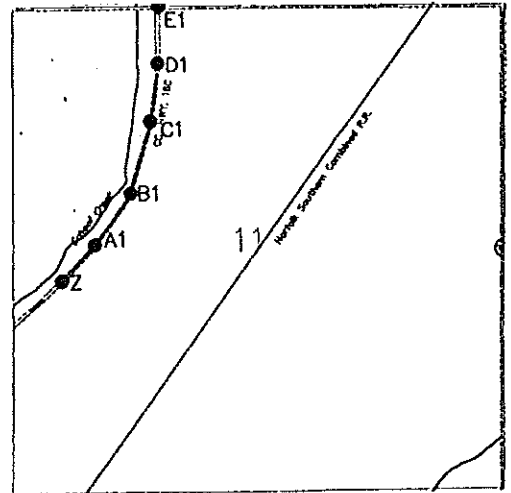
Point C1 Section 11

Marker PK Nail - 5½' east of c/l of pavement on E-W field line, ¼ mi. south of Rd. F

31.08' ESE to PK nail, south end 8" CMP

37.85' WSW to spike N/side power pole

15.70' ESE to mag nail north end 8" CMP



**Road 16C - Witness Ties - Updated 11/29 and 11/30/2005**

Point D1 Section 11

Marker Small RR Spike in pavement (center north bound lane) at Ricker (1987) property

56.91' W to duplex N/side power pole

78.35' NNW to mag nail in south root of tree

Point E1 Section 11

Marker RR Spike in pavement, west edge of 16C - P.I. of curve at Rd. F

40.13' NW to SE corner of conc. slab under "Wallace" headstone

44.67' N to "+" SW corner catch basin

50.62' NE to "+" (new) SE corner catch basin

39.45' SW to duplex E/side power pole

Point I.P. Section 11

Marker RR Spike over I.P. over Corner Stone at intersection N.line Sec. 11 (c/l Rd. F)

and the center line of Rd. 16C extended through P.I. from northeast

42.32' NW to SE corner of conc. slab under "Wallace" headstone

59.08' N to "+" SW corner catch basin

64.30' NE to "+" (new) SE corner catch basin

24.08' SW to duplex E/side power pole

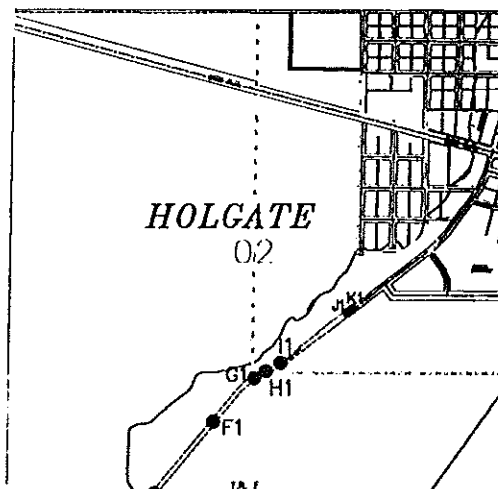
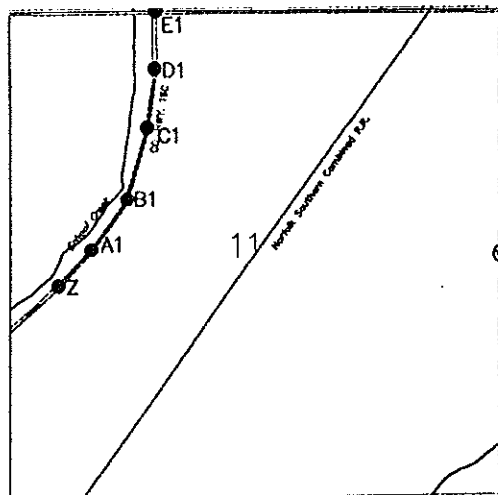
Point F1 Section 2

Marker Mag Nail in center of 16C at SE corner of Giesige (1987) property

23.59' W to duplex S/side telephone pole

28.70' SSE to duplex W/side power pole

24.96' NW to iron pin (no field check)



Road 16C - Witness Ties - Updated 11/29 and 11/30/200

Point G1 Section 2

Marker Iron Pin in yard of Lee Hornung (1987) property

Set PK Nails 15.00' S & E (5/19/93)

76.95' SW to corner conc. block garage foundation

64.22' NNW to corner conc. block house foundation

2.44' W of LP. is iron pipe from old c/l off construction plans in Engineer's Office

61.31' SW to duplex E/side telephone pole (1993)

59.73' NE to duplex W/side telephone pole (1993)

Point H1 Section 2

Marker Small RR Spike in center of 16C between curves

22.01' N to duplex W/side telephone pole

66.11' SE to NW corner brick house foundation

71.34' SW to duplex E/side power pole

Point I1 Section 2

Marker Iron Pin at east edge pavement, north of Clark (1987) property

PK's 6' NW & SW

31.87' SW to "+" in SW corner catch basin (P)

82.82' SW to duplex SE/side power pole

54.87' W to duplex in telephone pole

46.06' W to sawed "+" in westerly corner of catch basin (P)

Point J1 Section 2

Marker Small RR Spike in center of 16C, 62.12' south of corporation line (in 1987)

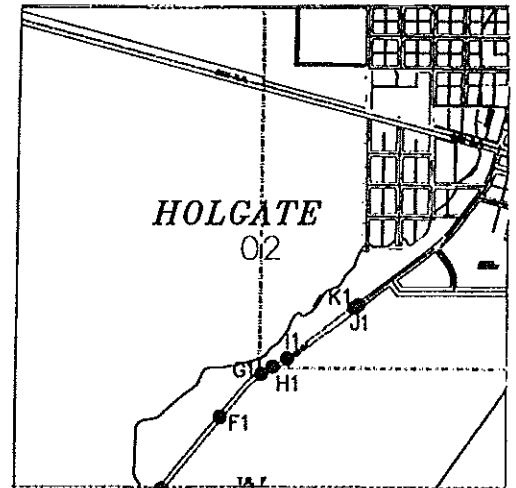
24.13' WNW to duplex S/side telephone pole

91.22' WNW to SE corner house foundation

91.74' NNE to duplex E/side power pole

73.60' ESE to NW corner brick veneer (house)

81.15' S to SW corner porch foundation



Road 16C - Witness Ties - Updated 11/29 and 11/30/200

Point K1 Section 2

Marker PK in center of 16C at Corporation Line (in 1987)

34.73' N to duplex E/side power pole

63.80' ENE to PK nail W/side power pole

94.27' ESE to NW corner garage foundation

19.93' NNW to sawed "+" south corner catch basin

