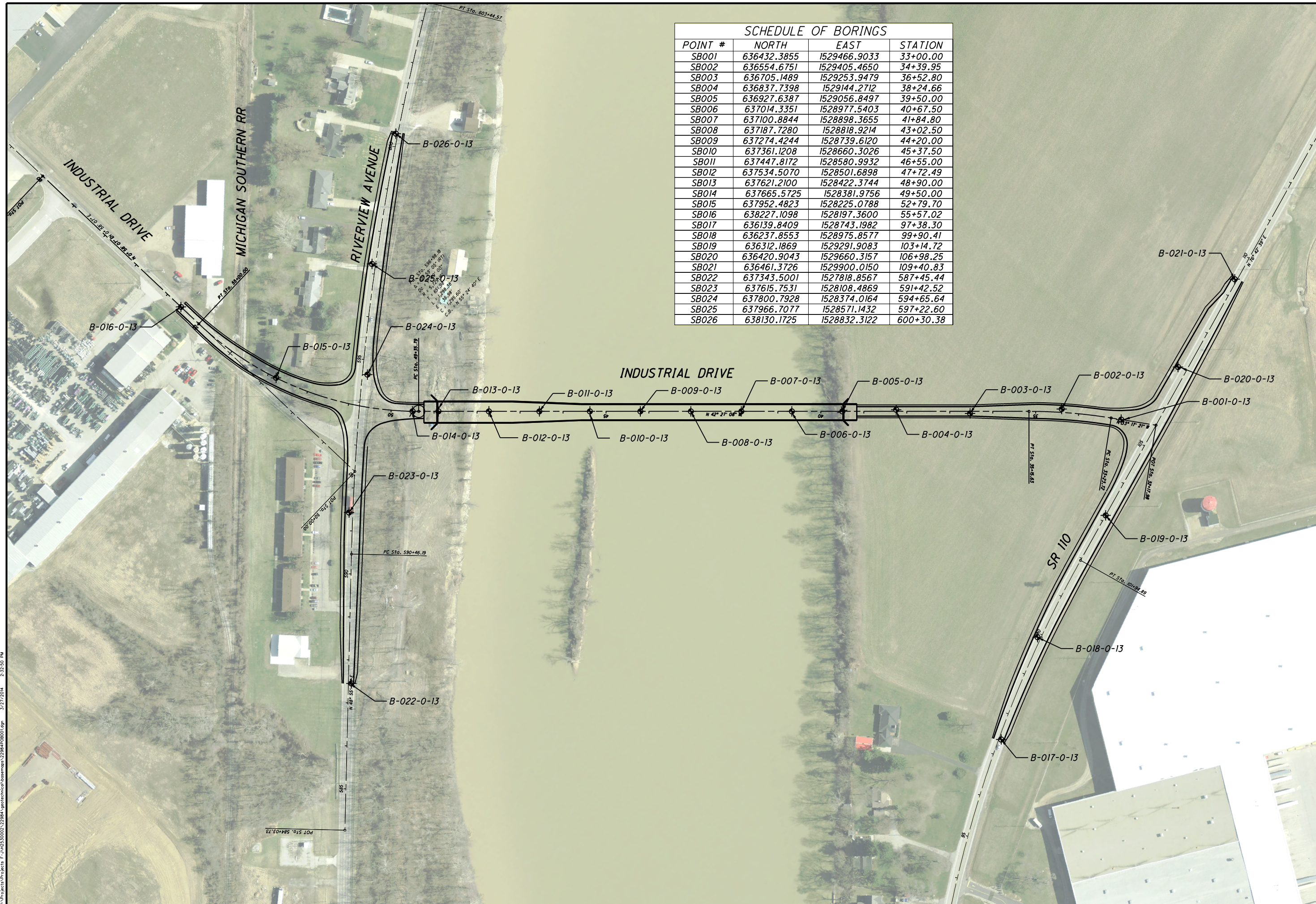


SCHEDULE OF BORINGS			
POINT #	NORTH	EAST	STATION
SB001	636432.3855	1529466.9033	33+00.00
SB002	636554.6751	1529405.4650	34+39.95
SB003	636705.1489	1529253.9479	36+52.80
SB004	636837.7398	1529144.2712	38+24.66
SB005	636927.6387	1529056.8497	39+50.00
SB006	637014.3351	1528977.5403	40+67.50
SB007	637100.8844	1528898.3655	41+84.80
SB008	637187.7280	1528818.9214	43+02.50
SB009	637274.4244	1528739.6120	44+20.00
SB010	637361.1208	1528660.3026	45+37.50
SB011	637447.8172	1528580.9932	46+55.00
SB012	637534.5070	1528501.6898	47+72.49
SB013	637621.2100	1528422.3744	48+90.00
SB014	637665.5725	1528381.9756	49+50.00
SB015	637952.4823	1528225.0788	52+79.70
SB016	638227.1098	1528197.3600	55+57.02
SB017	636139.8409	1528743.1982	97+38.30
SB018	636237.8553	1528975.8577	99+90.41
SB019	636312.1869	1529291.9083	103+14.72
SB020	636420.9043	1529660.3157	106+98.25
SB021	636461.3726	1529900.0150	109+40.83
SB022	637343.5001	1527818.8567	587+45.44
SB023	637615.7531	1528108.4869	591+42.52
SB024	637800.7928	1528374.0164	594+65.64
SB025	637966.7077	1528571.1432	597+22.60
SB026	638130.1725	1528832.3122	600+30.38



G

/

100

PLAN OF BORINGS

INDUSTRIAL DRIVE-PID NO., 22984

PROPOSED ALIGNMENT OVER MAUMEE RIVER

DRAWN BY: HMW
CHECKED: CAR

SCALE IN FEET

0
50
100
200

W:\Projects\Projects_F:\M2530002\22984\Technical\NameMap\22984PCB001.dwg 3/27/2014 2:32:50 PM