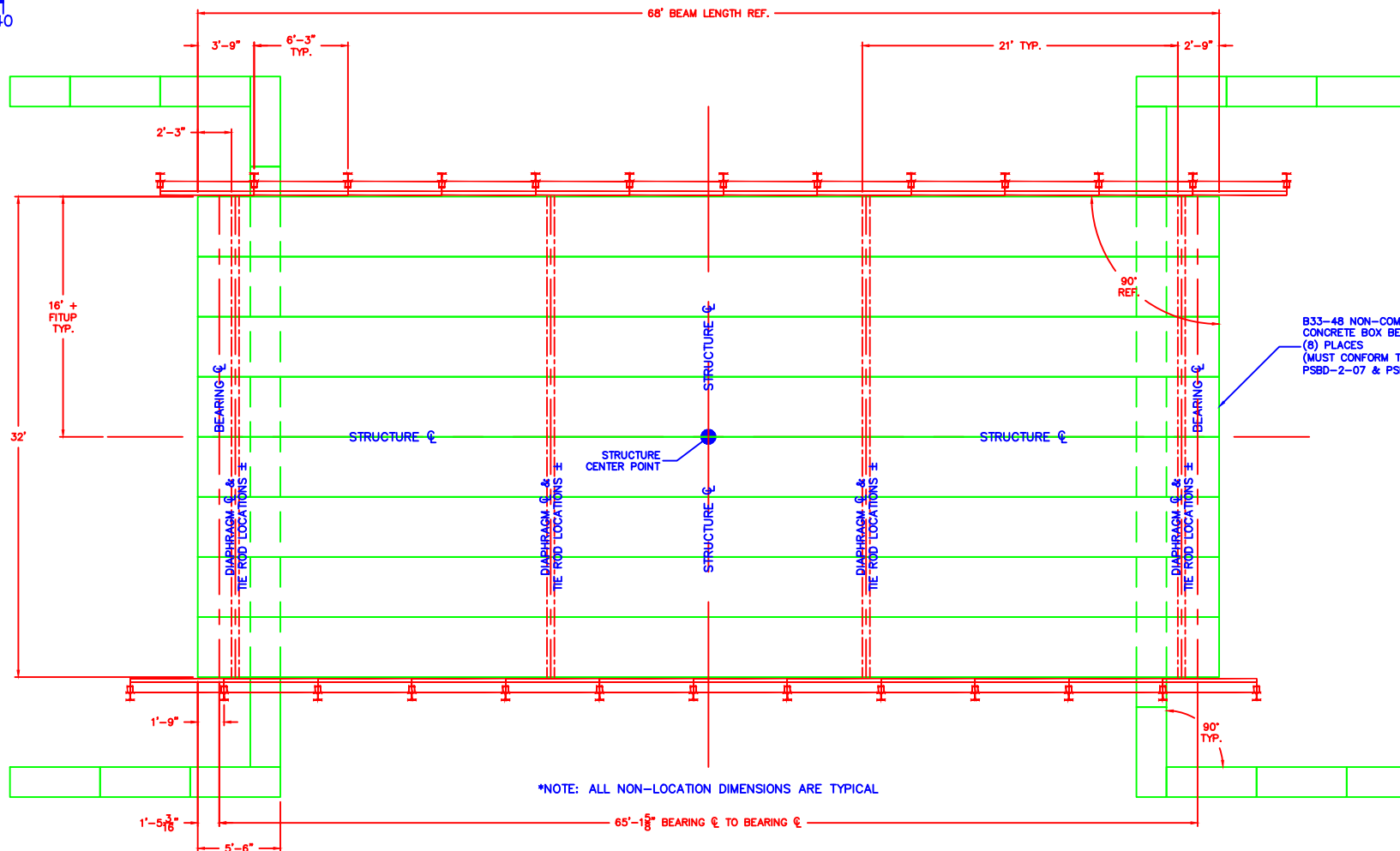


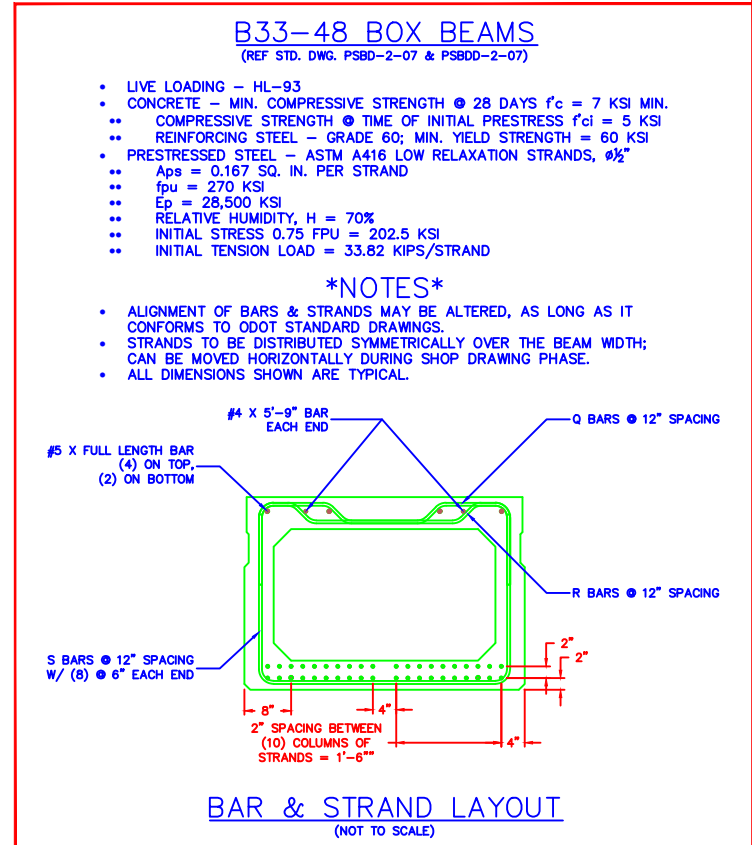
CREW LEADER: NOTE ADDITIONS & CHANGES DURING CONSTRUCTION, AND RETURN TO THE ENGINEER
HENRY CO. SIGN TECHNICIAN: PLACE "DO NOT DIG BETWEEN SIGNS" SIGNAGE & BRIDGE END MARKERS

3
3

HENRY COUNTY BRIDGE L-6.35
MONROE TOWNSHIP
BRIDGE REPLACEMENT - STR. DETAILS 2

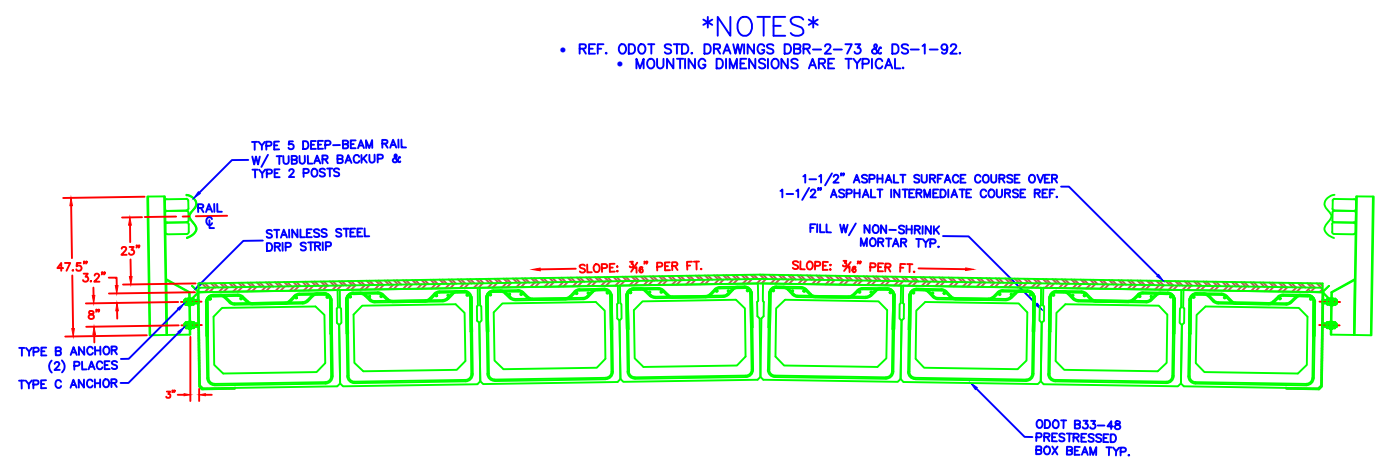


- *NOTES***
- TIE ROD LOCATIONS ARE APPROXIMATE.
 - DIAPHRAGMS, VOIDS, ETC. ARE NOT SHOWN ON BEAM DETAILS - REFER TO ODOT BOX BEAM DRAWINGS.
 - OMIT KEYWAY ON OUTSIDE OF FASCIA BEAMS.
 - STRUCTURE DOES NOT UTILIZE DOWELS OR ELASTOMERIC BEARING PADS.

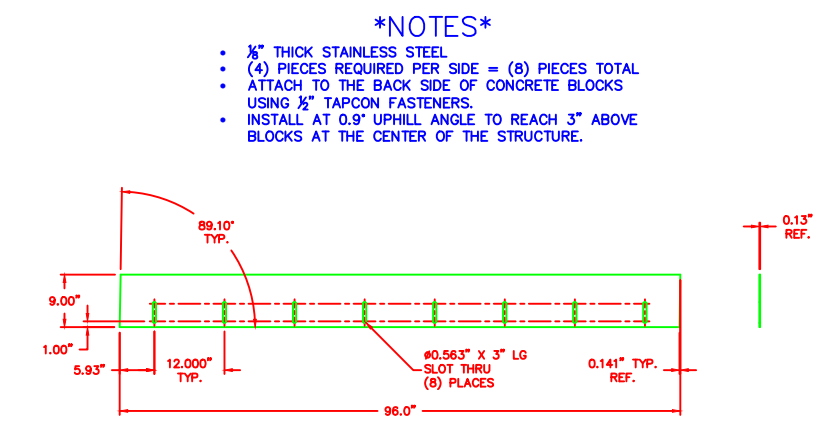


BEAM & BLOCK WALL DETAILS
(NOT TO SCALE)

BAR & STRAND LAYOUT
(NOT TO SCALE)



PAVEMENT, GUARDRAIL, & SIDEWALK DETAILS
(NOT TO SCALE)



BACKFILL RETENTION PLATE
(NOT TO SCALE - *DIMENSIONS IN INCHES*)

DRAWING DETAILS

| | |
|--------------|--------------|
| DRAWN BY: | JTH 02/20/25 |
| DESIGNED BY: | DH 01/24/25 |
| REVIEWED BY: | DH 02/24/25 |
| REVISED | |

TIMOTHY J. SCHUMM, P.E., P.S.
HENRY COUNTY ENGINEER
1823 OAKWOOD AVENUE
NAPOLEON, OHIO 43545
419-592-2976

