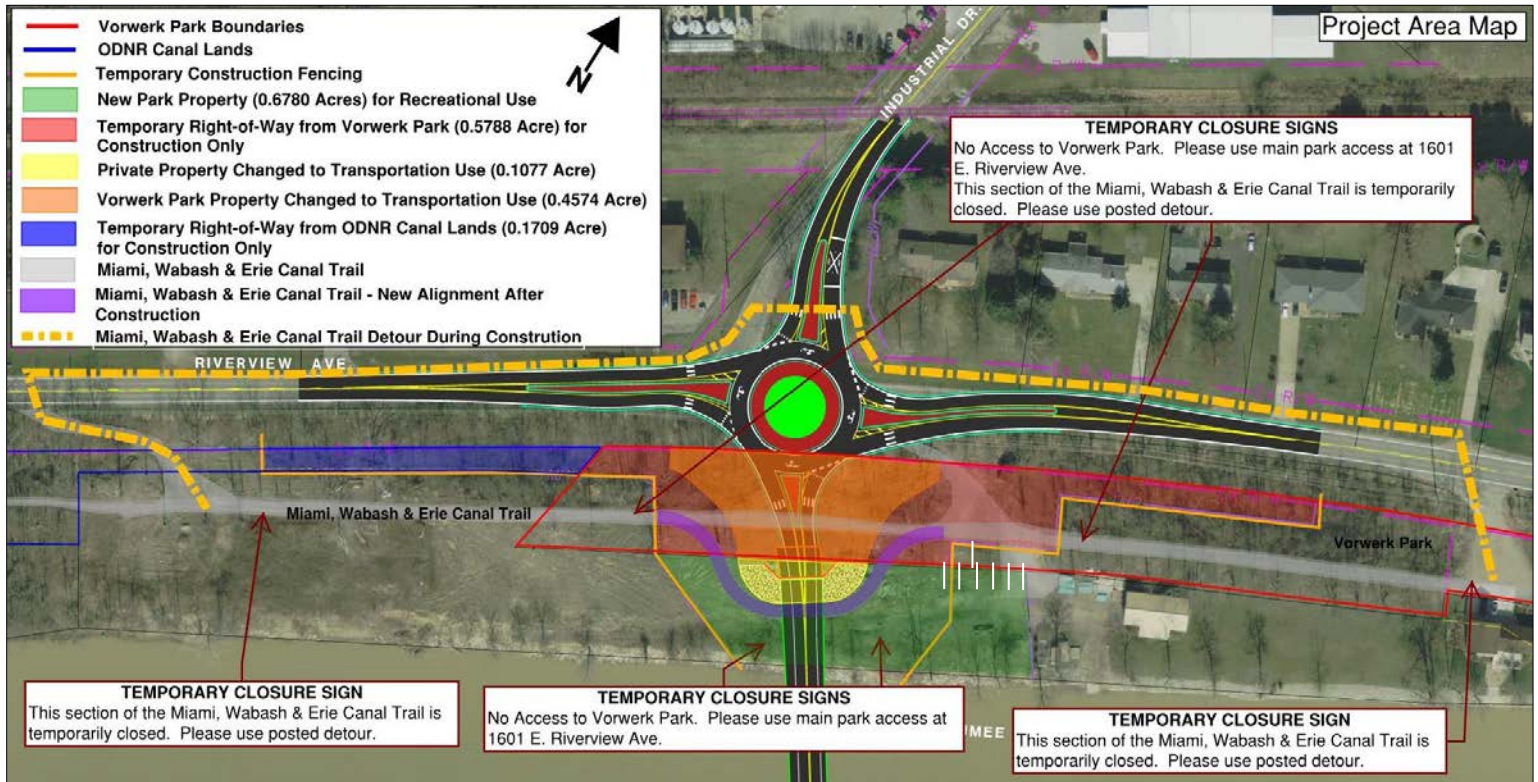




PLEASE COMMENT on proposed changes to Miami, Wabash & Erie Canal Trail and Vorwerk Park due to Proposed HEN - New Bridge Project



The Henry County Transportation Improvement District (HCTID), in cooperation with the Ohio Department of Transportation (ODOT), proposes to construct a new bridge over the Maumee River in the City of Napoleon. The project would impact Vorwerk Park, which is a 28.81 acre park comprised of picnic tables, grills, restrooms, drinking fountains, fishing access, parking and the multi-use Miami, Wabash & Erie Canal Trail. Vorwerk Park is located along the south side of E. Riverview Avenue and is owned and maintained by the City of Napoleon. (ODOT Project ID 22984)

Park Changes:

During Construction:

- ✓ Vorwerk Park access will be maintained at 1601 E. Riverview Avenue only, the main park access shall remain open
- ✓ No Vorwerk Park access in construction zone
- ✓ Miami, Wabash & Erie Canal Trail access will be maintained via detour shown above
- ✓ Temporary construction fencing will be placed between the park and construction, and trail and construction

After Construction:

- ✓ Miami, Wabash & Erie Canal Trail will be relocated under the new bridge
- ✓ Change 0.4574 Acre of Vorwerk Park changed to transportation use
- ✓ Add 0.2206 acres to Vorwerk Park for recreational use

Comment by June 11, 2018 to:

Timothy J. Schumm, P.E., P.S.

Henry County Engineer
1823 Oakwood Avenue
Napoleon, OH 43545
(419) 592-2976
tschumm@henrycountyengineer.com

Additional project information and supporting documentation is located on the HCE website at:

http://www.henrycountyengineer.com/index_files/NewBridge.htm

The environmental review, consultation, and other actions required by applicable Federal environmental laws for this project are being, or have been, carried-out by ODOT pursuant to 23 U.S.C. 327 and a Memorandum of Understanding dated December 11, 2015 executed by FHWA and ODOT.